

# **SBIA IS PURCHASING A LARGER CENTER**

**2345 Harris Way, San Jose, Ca 95131**

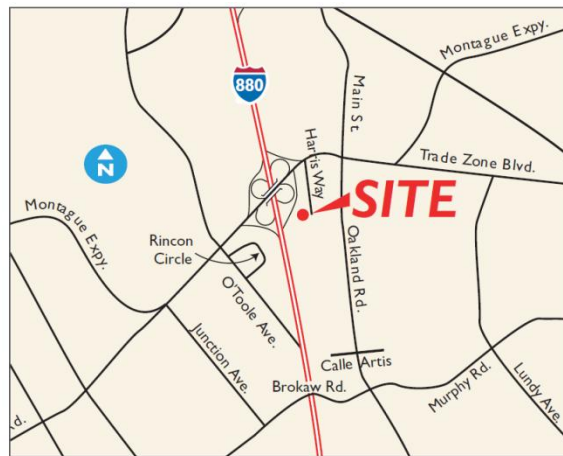
**Two Story Building in a Cul-de-sac - Totaling 70,100 Square Feet  
With over 200 parking spaces**

## **First Floor: 35,900 Sqft**

Private offices, conference room  
Multiple restroom cores  
Large open areas to configure for any use  
Four grade level and two dock high doors  
100% HVAC office

## **Second Floor: 34,200 Sqft**

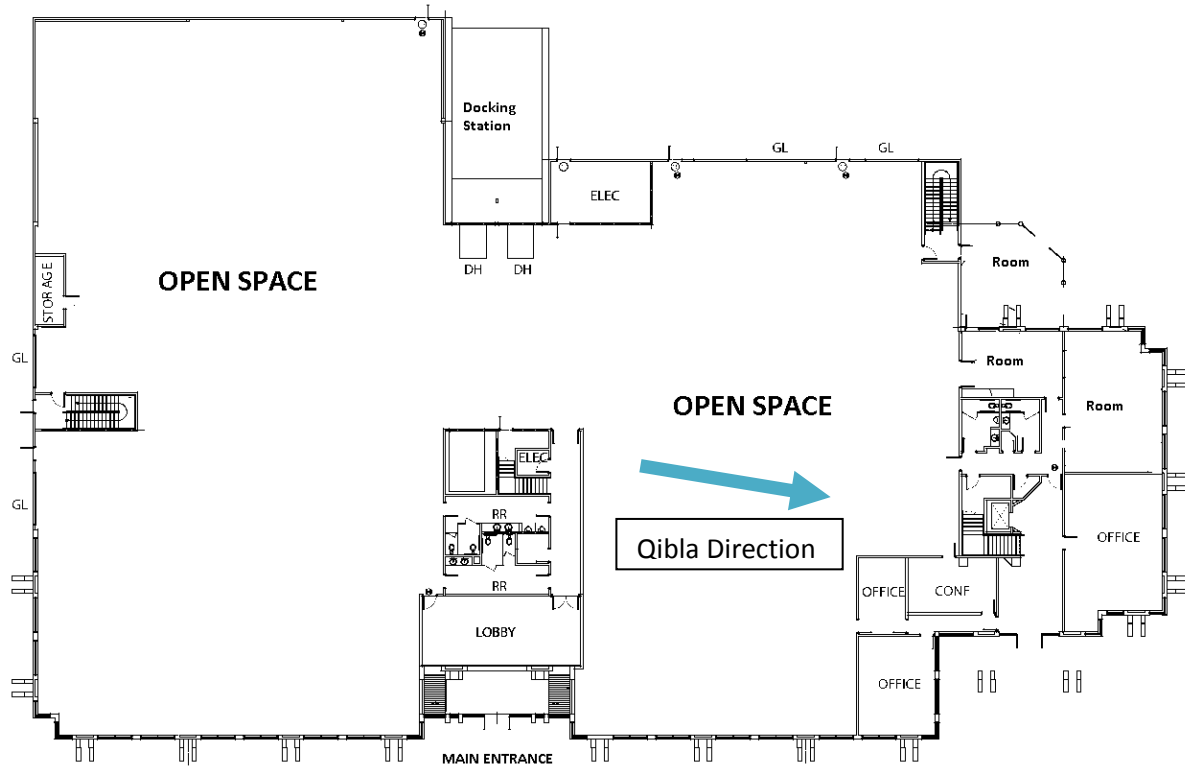
Elevator served  
Three conference rooms  
Private rooms and an executive office  
Large open areas for congregation  
Break rooms, Activity rooms



**Qibla**



## SBIA Larger Center – 1st Floor (2345 Harris Way, San Jose, Ca 95131)



## SBIA Larger Center – 2nd Floor (2345 Harris Way, San Jose, Ca 95131)

